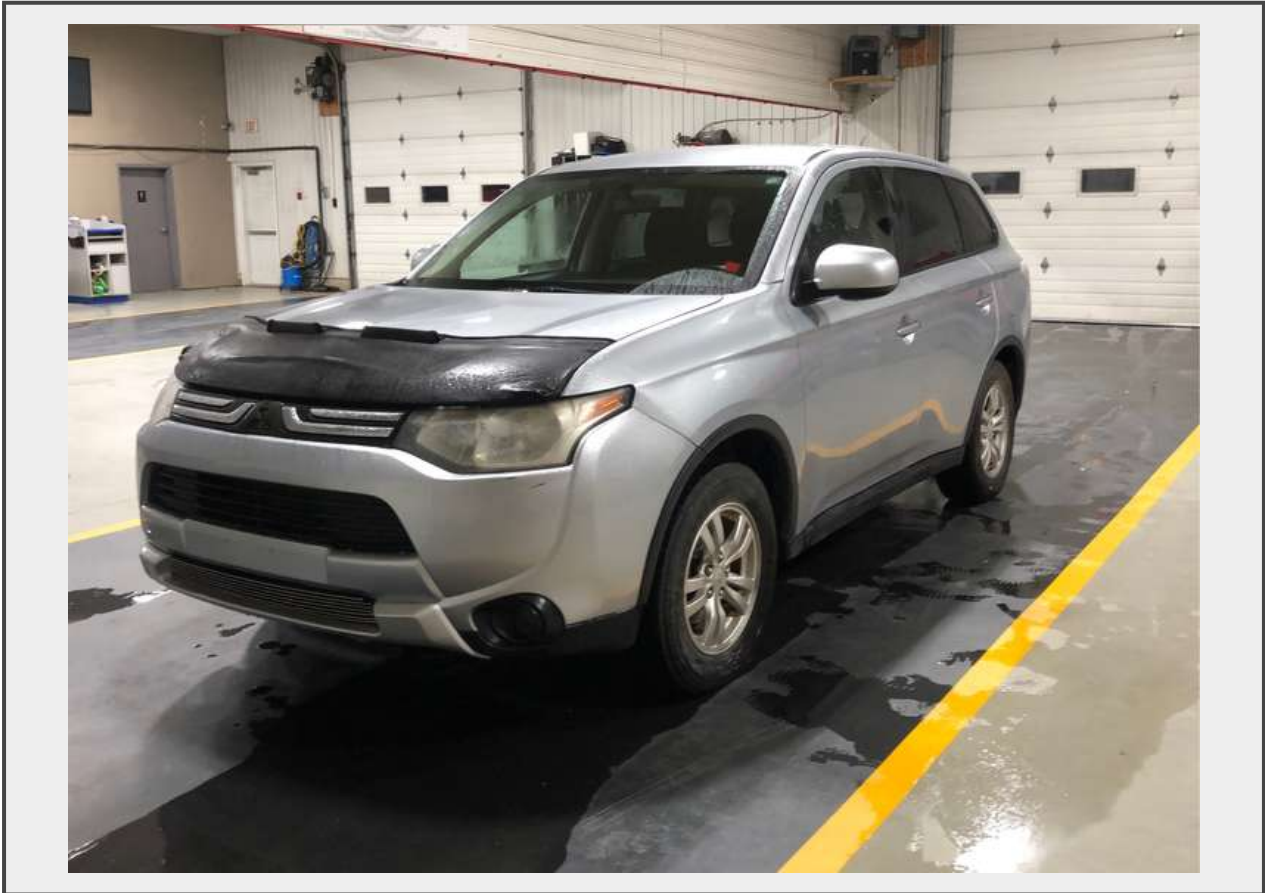


**Sale Name:** MAJOR AUTOMOTIVE AUCTION - FRIDAY OCTOBER 13, STARTS AT 9:00 AM. DOORS OPEN AT 7:30 AM FOR VIEWING

**LOT 91 - 2015 Mitsubishi Outlander**



**VIN** JA4AZ2A36FZ600485

**YEAR** 2015

**MAKE** Mitsubishi

**MODEL** Outlander

**TRIM** ES

**ENGINE** 2.4

**CYLINDERS** 4

**DRIVETRAIN** AWD

**BODY** 4 DOOR

**TRANSMISSION** AUTOMATIC

**FUEL TYPE** GAS

**PLATE NUMBER** JPO 214

**PLATE DATE** 12/23

**MVI** 02/24

**MILEAGE** 175,572 KM

**SPEEDOMETER** KM

**ODOMETER** KM

**ENGINE LIGHT** THIS UNIT IS BEING SOLD WITH ENGINE LIGHT ON

**FEATURES** PWR WINDOWS, PWR LOCKS , PWR MIRRORS, MANUAL SEATS, CRUISE CONTROL, TILT, HEATED SEATS, ALUM RIMS

**AIR CONDITIONING/HEAT** AC FUNCTIONING, HEAT FUNCTIONING

**TECHNOLOGY** CD PLAYER, BLUETOOTH, HANDS FREE CALLING

**SEATING** STANDARD SEATING

**INTERIOR TRIM** CLOTH

**INTERIOR CONDITION** GOOD

**INTERIOR COMMENTS** weather tech floor mats, four tires mounted on steel rims in rear of vehicle

**EXTERIOR CONDITION** GOOD

**EXTERIOR - COMMENTS** Left front fender dent, left front door scratches, inside left front door scratches on door sill, left rear door dents, left rear fender dent, left rear tail light broken, rear bumper scratches/paint chips/trim loose, Right rear door dent, front bumper missing emblem/license plate holes/scuff on left side, Rust bubbles/ paint chips on hood

**TIRE COMMENTS (BASED ON CENTER OF TIRE)** Front tires 30%, rear tires 30%

**COLOUR** BLUE

**KEYS** YES

**DECLARATION** REBUILT TITLE, REQUIRES VENDORS APPROVAL

**TITLE** REBUILT

**SALES STATUS** GREEN LIGHT

**SALES CATEGORY** CONSIGNMENT

### Description

**\*\*\*REBUILT TITLE\*\*\***

**Four tires mounted on steel rims in rear of vehicle**

[Carfax; Rebuilt Title, Collision Claim \\$19,711](#)

**ENGINE LIGHT ON** THIS UNIT IS BEING SOLD WITH ENGINE LIGHT ON

**DECLARATION** - REBUILT TITLE, REQUIRES VENDORS APPROVAL

**SALES STATUS** GREEN LIGHT

**SALES CATEGORY** - CONSIGNMENT

**Quantity:** 1



<https://jardine.auctioneersoftware.com/>